

ALPINION MEDICAL SYSTEMS  
We are Ultrasound Professionals

**ALPINION**  
MEDICAL SYSTEMS



# ECUBE8 LE

The Essentials for your daily practice



# Satisfaction with Image Quality

Clear images delivered by the high-performance transducers and system will assist you to perform examinations more quickly and obtain more accurate diagnoses.

## Transducers powered by PowerView™: C1-6CT/P1-5CT



PowerView™ technology is applied to the Convex and Phased array transducers. PowerView™ technology disperses heat generated by the transducers, improving its durability and ensuring the stability of diagnosis. The increased efficiency of ultrasonic waves enhances signal sensitivity and improves the clarity of clinical images.

## High-performance linear transducers: L3-12H/L3-12H<sup>WD</sup>



The high-density linear transducers can be attached to the E-CUBE 8 LE. Several footprint width options and high-quality linear images help with breast/thyroid/musculoskeletal/vascular examinations.



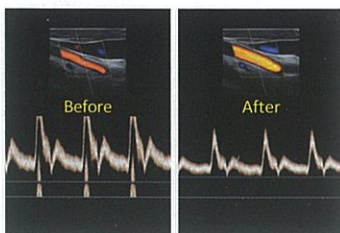
## Flagship model-grade platform

The E-CUBE 8 LE has the same high-end hardware and software platforms also used on the top model produced by Alpinion. The resolution, contrast, and uniformity of 2D images have been improved, and with the addition of the Dual pulser, clear and accurate Doppler data can be displayed while maintaining sharp 2D images in Doppler Combined Mode.



## Optimal Imaging Suite™ Plus

By combining Alpinion's image optimization processing technologies, artifacts are eliminated more effectively, boundaries between tissues are distinguished more clearly, tissue textures are expressed more richly, and accurate data is provided.



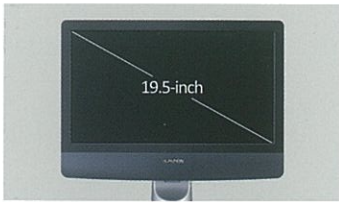
## Xpeed™

Simply press the Xpeed™ button once to quickly optimize images in 2D Mode and Spectrum Doppler Mode for different clinical cases.



# Simplicity of Workflow Design

As the E-CUBE 8 LE can be used easily and conveniently in different clinical environments, you can focus more on taking care of patients.



## Monitor that delivers accurate images

The 19.5-inch full HD LED monitor with 1,600 × 900 pixel high-resolution delivers sharp, clear ultrasound images. With the use of IPS (In-Plane Switching) technology, image distortions do not occur and a wider field of view is provided.



## Quick and easy control panel

All control panel keys are arranged in the most efficient and intuitive manner for examination. You can also save system presets to user keys or keyboard keys and load them later conveniently (Power Preset).



## User-oriented storage space

You can place frequently used writing materials and medical supplies at the top of the control panel in the storage space, while a USB port located on the front allows a quick and convenient connection.



## SSD for quick examination preparation

The E-CUBE 8 LE uses high-end hardware and an SSD. These enhance stability when using the system, and the fast booting time makes speedy preparation for examinations possible.

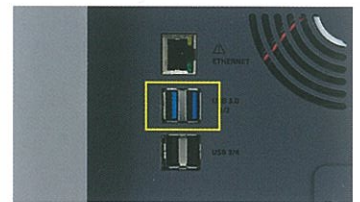
## Battery that frees you from space restrictions

The combination of a compact exterior design and attached battery makes the E-CUBE 8 LE much easier to transport. You can move to a different location while in Exam Mode without connecting the power cable.



## USB 3.0 that allows you to focus more on providing patient care

The E-CUBE 8 LE uses a USB 3.0 port which reduces the transfer time when exporting data, allowing you to focus more on patient care.



## Gel warmer developed for patient convenience

The gel warmer warms up the ultrasound gel before examination. The temperature can be adjusted in three steps according to examination circumstances.



## Endocavity transducer holder that improves patient care quality

It prevents the long Endocavity transducer from obscuring your view of the monitor or interfering with your hand movements during scanning, keeping the transducer safe and clean.









# In-house Developed & Manufactured Transducers

Alpinion develops and manufactures transducers in-house.  
Reliable quality / Best compatibility / Cheaper maintenance / Faster repair

## Transducer Guide

\* A biopsy kit is available

### Convex



**SC1-6H \***  
High density  
single crystal convex  
Fetal, Abdominal, Pediatric,  
Musculoskeletal(MSK),  
Peripheral vessel, Urology



**C1-6CT \***  
C-Architecture  
(PowerView™) convex  
Fetal, Abdominal, Pediatric,  
Musculoskeletal(MSK),  
Peripheral vessel, Urology



**SC1-4HS \***  
Wide angle high density  
single crystal convex  
Fetal, Abdominal, Pediatric,  
Musculoskeletal(MSK),  
Peripheral vessel, Urology



**SC1-4H \***  
High density  
single crystal convex  
Fetal, Abdominal, Pediatric,  
Musculoskeletal(MSK),  
Peripheral vessel, Urology



**C5-8NT**  
Micro convex  
Abdominal, Pediatric,  
Neonatal cephalic, Cardiac,  
Peripheral vessel

### Linear



**L8-17H**  
High density linear  
Fetal, Abdominal, Pediatric,  
Small organ, Neonatal cephalic,  
Musculoskeletal(MSK),  
Peripheral vessel



**L3-12H \***  
High density linear  
Abdominal, Pediatric,  
Small organ, Neonatal cephalic,  
Musculoskeletal(MSK),  
Peripheral vessel



**L3-12H<sup>WD</sup>**  
High density linear,  
64mm wide footprint  
Fetal, Abdominal, Pediatric,  
Small organ, Musculoskeletal  
(MSK), Peripheral vessel



**L3-12T \***  
Linear  
Abdominal, Pediatric,  
Small organ, Neonatal cephalic,  
Musculoskeletal(MSK),  
Peripheral vessel



**IO8-17**  
High frequency hockey  
stick linear  
Intra-operative, Pediatric,  
Small organ, Musculoskeletal(MSK),  
Peripheral vessel

### Endocavity



**EC3-10T \***  
Endocavity (straight)  
Fetal, Trans-rectal,  
Trans-vaginal,  
Peripheral vessel, Urology



**EV3-10T \***  
Endocavity (curved)  
Fetal, Trans-rectal,  
Trans-vaginal,  
Peripheral vessel, Urology



**E3-10 \***  
Endocavity (straight)  
Fetal, Trans-rectal,  
Trans-vaginal,  
Peripheral vessel, Urology



**VC1-6T**  
Volume convex  
Fetal, Abdominal, Pediatric,  
Urology



**VE3-10H \***  
High density volume endocavity  
Fetal, Trans-rectal, Trans-vaginal,  
Peripheral vessel, Urology

### Phased Array



**P1-5CT**  
C-Architecture (PowerView™)  
phased array  
Fetal, Abdominal, Pediatric,  
Adult cephalic, Cardiac,  
Peripheral vessel



**SP3-8T**  
Single crystal phased array  
Fetal, Abdominal, Pediatric,  
Neonatal cephalic,  
Adult cephalic, Cardiac



**CW5.0**  
Pencil typed  
Cardiac



**CW2.0**  
Pencil typed  
Cardiac

### Pencil Typed



The E-CUBE 8 LE is a smart product that includes the absolutely essential features of the E-CUBE 8. The E-CUBE 8 LE is easy to use, and helps you make quick and accurate diagnoses. It is a great partner for medical practitioners, and provides patients with a comfortable healthcare experience.

The E-CUBE 8 LE delivers superior image quality and it can be utilized in a wide variety of applications in different specialized areas. The highly cost-effective and more efficient E-CUBE 8 LE is the most rational choice for you.

**ALPINION MEDICAL SYSTEMS Co., Ltd.**

ALPINION MEDICAL SYSTEMS Co., Ltd., 77, Heungan-daero 81beon-gil, Dongan-gu, Anyang-si, Gyeonggi-do, Korea

Homepage [www.alpinion.com](http://www.alpinion.com)

E-mail [international@alpinion.com](mailto:international@alpinion.com)

TEL +82-2-3282-0900

FAX +82-2-851-5591

Standalone clinical images may have been cropped to better visualize pathology.

Copyright©2018 ALPINION MEDICAL SYSTEMS CO.,LTD. All rights reserved.

Catalogue contents may change without prior notice to customers due to performance enhancements.