



Happier Living Everyday

MINI5000

Anywhere Anytime Anybody

Anywhere Anytime Anybody

minisono

The minisono system is a new generation, tablet-based ultrasound diagnostic system that is smaller, simpler, and more compact than the existing bulky, complicated systems.

You can connect a minisono to a Microsoft Surface tablet and perform ultrasound scans using software supported by the Windows platform. minisono can be used conveniently in space- and time-constrained environments, such as a clinic, hospital ward, emergency room, or operating theater, while ensuring high-quality diagnostic examinations.

In addition, medical practitioners can get up close and personal with patients during examinations, which helps them build trust. Accompanying you anytime, anywhere, minisono will introduce a new paradigm in ultrasound diagnosis.





Mobility unlimited potential

minisono is light, compact, and easy to move

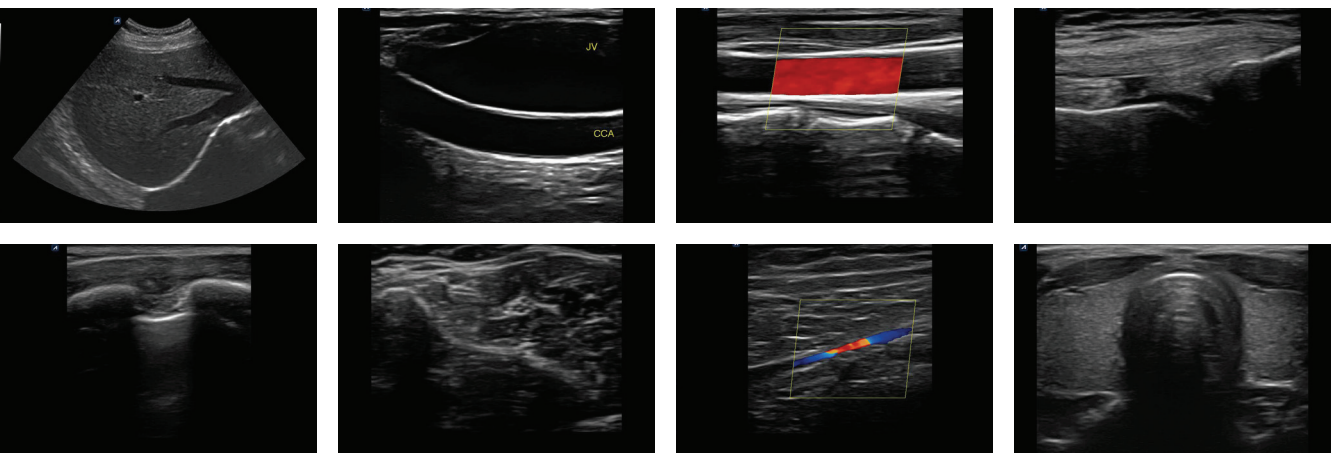
minisono is light, compact, and easy to move. Since it's both small and portable, you can use it conveniently even in tight spaces without having to change the position of the patient or other devices. You can scan a patient exactly when the need arises and make a diagnosis quickly, anytime, anywhere. This kind of experience can make patients feel more relaxed and increase their trust in the examination.



Quality imaging for handheld

minisono ensures quality image for valuable challenge

Ultrasound system company Alpinion has combined transducer and image-processing technologies to ensure that minisono provides sharper and clearer high-definition 2D images and Doppler information. Using two types of transducers, Convex and Linear, you can scan from the deepest to the most superficial part of the human body. The transducers have a wide range of applications, and can be used in a variety of clinical situations.





Focusing ease of use

Make it easy – All you need is a minisono and a Surface tablet

You can quickly and easily use minisono as soon as you connect the tablet with the transducer via USB. minisono's uniquely simple and intuitive user interface, combined with the tablet's familiar touch control, will help you to focus on scanning. minisono is easy to operate and provides the most essential features, so it is perfect for training medical practitioners in ultrasound scanning. Thanks to minisono, you can dramatically reduce the learning curve for people training in ultrasound scanning techniques.





System feature

Physical Dimensions



- minisono L3-12
- Height: 25.5 mm
- Width: 62.5 mm
- Depth: 150 mm
- Weight: 160 g



- minisono C1-6
- Height: 25.5 mm
- Width: 62.5 mm
- Depth: 157 mm
- Weight: 165 g

Clinical Applications

·Small Parts ·MSK ·Vascular ·Urology ·Abdomen ·EM ·Breast

Device Values





Extreme Accuracy
Efficient Workflow
Ergonomic Design

ALPINION promises to provide these three values to customers.
We are Ultrasound Professionals

MINISONO

Anywhere Anytime Anybody

ALPINION MEDICAL SYSTEMS CO., LTD.

Verdi Tower, 72, Digital-ro 26-gil, Guro-gu, Seoul, 152-848, Korea
Homepage www.alpinion.com
E-mail international@alpinion.com
TEL +82-2-3282-0900
FAX +82-2-851-5591

Copyright©2019 ALPINION MEDICAL SYSTEMS CO.,LTD.
All rights reserved.

BPL MEDICAL TECHNOLOGIES PRIVATE LIMITED

Regd. Office: 11th KM, Bannerghatta Road, Arakere, Bangalore - 560076
Phone +91 80 26484388/ 2648 4350
Toll Free 1800-425-2355
Website www.bplmedicaltechnologies.com
For Enquiries: sales.medical@bpl.in
CIN:U33110KA20212PTC067282

Copyright©2019 BPL Medical Technologies Private Limited. All rights reserved.